

**PCcardsDirect.com**

# **mSATA**

**Mini SATA Disk**

**Industrial Grade NAND Flash Memory**

**Product Specification**

**V1.0**



## Table of Contents:

<b>1</b>	<b>Description</b> .....	1
1.1	Features.....	1
1.2	System Specifications.....	2
<b>2</b>	<b>Physical Specifications</b> .....	3
<b>3</b>	<b>Ordering Information</b> .....	4
3.1	Part Number.....	4



## 1. Description

mSATA or mini SATA is one of the latest innovations for embedded applications. Using the SATA 2.0 interface the mSATA module is the ideal SSD replacement for any system using a traditional spinning 1.8", 2.5" or 3.5" hard drive. When space is an issue this module is a suitable alternative. Available in both MLC and SLC grades this solid state drive is a proven solution for tomorrow's technology.



### 1.1 Features

- 8 Times smaller than traditional 2.5" hard drive
- Ideal for portable computing
- RoHS compliance
- Industrial Temperature rated at  $-40^{\circ}\text{C} \sim +85^{\circ}\text{C}$
- Advanced Wear Leveling algorithms for better ECC management



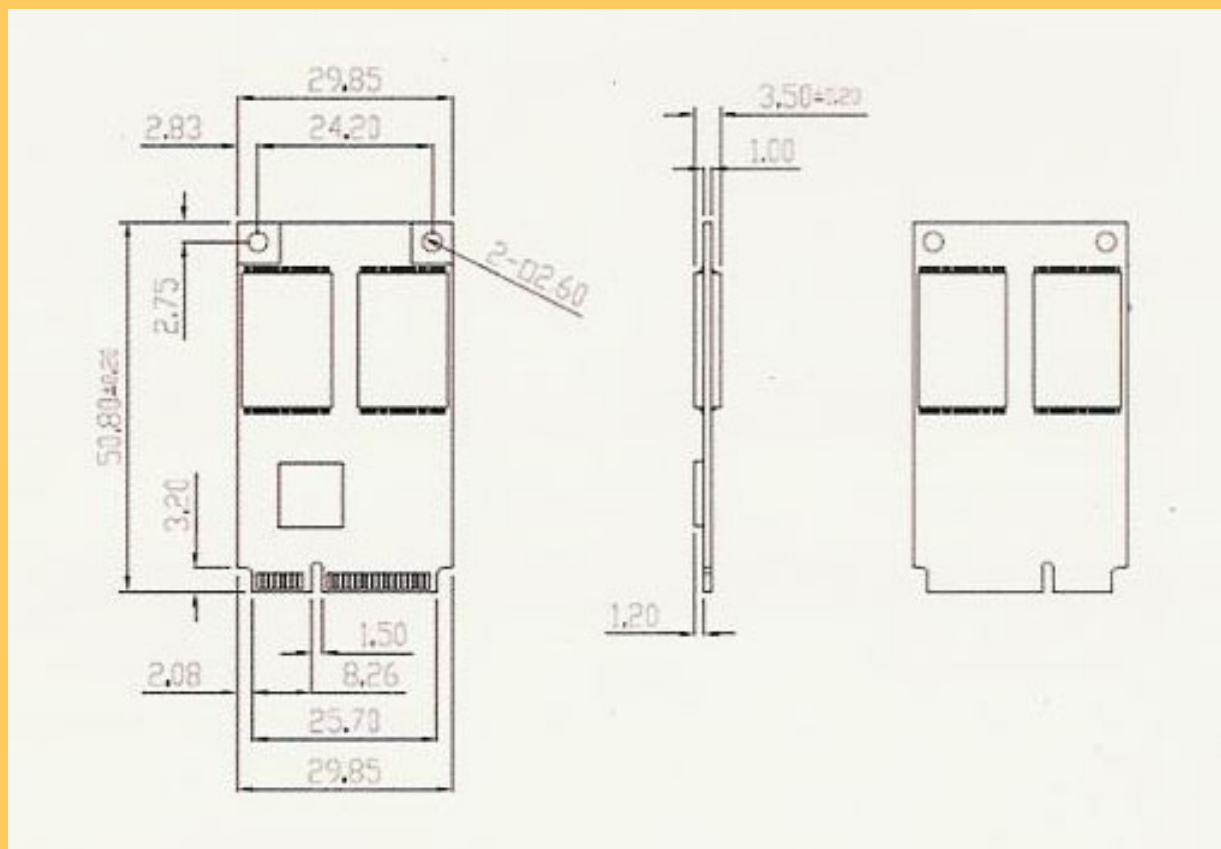
## 1.2 System Specifications

General Specification	
Flash Technology	NAND Type Flash Memory Based
Compatibility	Serial ATA II
Form Type	mSATA
Flash Capacity	up to 256GB
Media Transfer Rate	Sequential Read SLC: 100MB/sec max Sequential Write SLC: 50MB/sec max
Support	Error Correcting Code (ECC) / Wear-Leveling and advanced bad sector management algorithms
Environment Specification	
Standard Operating Temperature	0°C ~ +70°C
Wide Operating Temperature	-40°C ~ +85°C
Supported OS	Windows XP / Windows 2000 Windows Vista / Windows 7
System Reliability	
MTBF	more than 2 Million HRS
Endurance	more than 2 Million CYCLES
Power Voltage	+3.3V ± 10%
Power Consumption	270 mA(MAX)



## 2. Physical Specifications

Parameter	Description
Weight	7.0 g
Length	50.80 mm
Width	29.82 mm
Thickness	3.5 mm



### 3. Ordering Information

Capacity	Part Number
1GB	PCDMSED1024MBI
2GB	PCDMSED2048MBI
4GB	PCDMSED4096MBI
8GB	PCDMSED8192MBI
16GB	PCDMSED016GBI

